

Del Mar Middle School



School Accountability Report Card

Data From the 2006-2007 School Year • Published During 2007-2008

Grades 6-8
105 Avenida Miraflores Tiburon, CA 94920
Phone (415) 435-1468 Fax (415) 435-6190
Web site: www.reedschools.org

Christine Carter
Superintendent

Kit Pappenheimer
Principal

Principal's Message

One of three schools within the 112-year-old district, Del Mar Middle School serves Tiburon, Belvedere, and east Corte Madera. Del Mar School provides a common place of gathering for all three communities, reflecting small-town pride, an intense appreciation of, and participation in, our schools, and a tradition of generous support of public education. Del Mar received the California Distinguished School Award in 2003. Del Mar provides a unique educational experience for the early adolescent. We are committed to every child becoming a confident learner and a respectful, responsible citizen by nurturing, teaching, and inspiring each child to thrive in a challenging, dynamic world. We hope to develop in students a great love of learning and confidence in their uniqueness and potential. We involve students in a full range of learning activities to achieve academic excellence, critical thinking skills, and creative, personal and social responsibility. We work cooperatively with staff, parents, district administration and community members to create the best possible environment for our students and school community.

We are committed to every child becoming a confident learner and a respectful, responsible citizen by nurturing, teaching and inspiring each child to thrive in a challenging dynamic world.

Parental Involvement

At the heart of the Del Mar community is the conviction that the responsibility for successful education is shared among families, the school, and the individual children. All parties are actively engaged in the product, and this participation is demonstrated in every area of the school. Family-school partnerships and collaborative decision-making are evident in district government, school site politics, PTA business, classroom activities and the personal relationships between teachers and families. Parent volunteers headed up our \$38 million Rebuilding Reed School Bond Campaign which passed with 74% of the vote!

Back-To-School Night, Volunteer Work Day, Steel Band assemblies, music assemblies, eighth grade Living Pillar assemblies and Panels, Open House, our bi-annual Career Day, the annual Talent Show and the annual Spring Play are events that are bursting with attendance by staff and Del Mar families alike. They are well attended because the school community is happy and healthy. Shared decision-making is alive and well, but could not take place without the mutual respect, trust and honesty we share.

For more information on how to become involved, contact Kit Pappenheimer, Principal, at (415) 435-1468.

Public Internet Access

Computers with Internet access are available for student and parent use at each school library; for information on usage of the school library, please contact the school. Individuals without home Internet access can use computers with Internet connections at the public library within the Reed Union School District to download and view School Accountability Report Cards. For information on usage of the Belvedere Tiburon Library, including use of computers with Internet access, please call (415) 789-2665.



Board of Trustees

Ms. Teri Jacks
Board President

Ms. Lisa Mathews
Vice President

Mr. Daniel Jackson
Clerk

Mr. Merrill Boyce
Trustee

Ms. Vickie Mavromihalis
Trustee

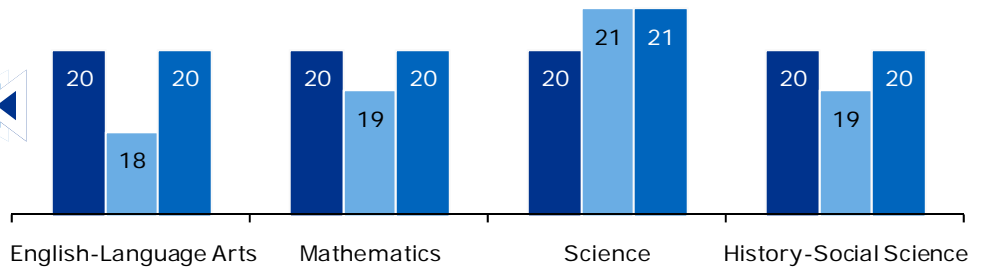




Class Size

The adjacent chart displays the three-year data for average class size.

■ 04-05 ■ 05-06 ■ 06-07



Professional Development Days

For the previous three school years, we had five days each year dedicated to staff and professional development.

Textbooks and Instructional Materials

All textbooks are adopted by the Board of Trustees using the State-approved list. The District follows the schedule for adoption of K-8 materials adopted by the State Board of Education.

A committee of teachers and administrators review materials from the State-adopted list at the Marin County Office of Education. Materials to be piloted by classroom teachers are selected and used in the classroom for evaluation purpose. The committee makes a formal recommendation to the Board on which materials to adopt.

The Reed Union School Board of Trustees ensures that all students have access to their own textbooks and instructional materials.

All students in Music, Art, and Drama classes have access to the appropriate textbooks and instructional materials. Del Mar Middle School offers the following visual and performing arts classes: Drama, Instrumental Band, Steel Pans, Art, and Choral Music.

Class Size Distribution — Number of Classrooms By Size									
Subject	2004-05			2005-06			2006-07		
	1-22	23-32	33+	1-22	23-32	33+	1-22	23-32	33+
English-Language Arts	14	4		19	1		12	5	
Mathematics	13	4		14	3		14	3	
Science	12	5		10	5		9	7	
History-Social Science	14	4		13	3		11	5	

Textbooks and Instructional Materials

Quality and Availability of Textbooks		
Subject	Textbook	Adopted
English-Language Arts	Houghton Mifflin (K-5)	2002
English Language Arts	Holt (6-8)	2002
Mathematics	Houghton Mifflin (K-5)	2001
Mathematics	McDougal Littell, College Preparatory Mathematics (6-8)	2001
Science	FOSS (K-8)	2008
Science	Pearson/ Prentice Hall	2007
History-Social Science	Scott Foresman (K-5)	2007
History Social Science	TCI (6-8)	2007

Subject	Percentage of Pupils Who Lack Their Own Assigned Textbook and Instructional Materials
Reading/Language Arts	0%
Mathematics	0%
Science	0%
History-Social Science	0%
Health	0%
Foreign Language	0%
Visual & Performing Arts	0%

Note: This data was most recently collected and verified in August 2007.



School Facility Good Repair Status

School Facility Conditions and Improvements				
Item Inspected	Repair Status			Repair Needed and Action Taken or Planned
	Good	Fair	Poor	
Gas Leaks	✓			
Mechanical Systems	✓			
Windows/Doors/Gates (interior and exterior)	✓			
Interior Surfaces (walls, floors, and ceilings)	✓			
Hazardous Materials (interior and exterior)	✓			
Structural Damage	✓			
Fire Safety	✓			
Electrical (interior and exterior)	✓			
Pest/Vermin Infestation	✓			
Drinking Fountains (inside and outside)	✓			
Restrooms	✓			
Sewer	✓			
Playground/School Grounds	✓			
Roofs	✓			
Overall Cleanliness	✓			
Overall Summary of Facility Condition				
Item Inspected	Exemplary	Good	Fair	Poor
Overall Summary	✓			

Note: The most recent school site inspection and completion of the inspection form occurred in August 2007.

School Facilities

The adjacent table shows the results of the school's most recently completed inspection, using the Facilities Inspection Tool (FIT) or equivalent school form. This inspection determines the school facility's good repair status.

Del Mar Middle school was built in the 1950's. Since 2002, all eighteen classrooms, the library, science classrooms, and school offices were modernized.

A cyber lounge was created and a new gym was built. The office building and the library building were connected, creating space for a new, expanded teacher workroom. A learning center was added, as well as a tech office and additional office space. New fields were added in 2007-08.

The school is in excellent condition and is cleaned daily by a staff of three full-time custodians, who work from 2 PM to 10:30 PM.

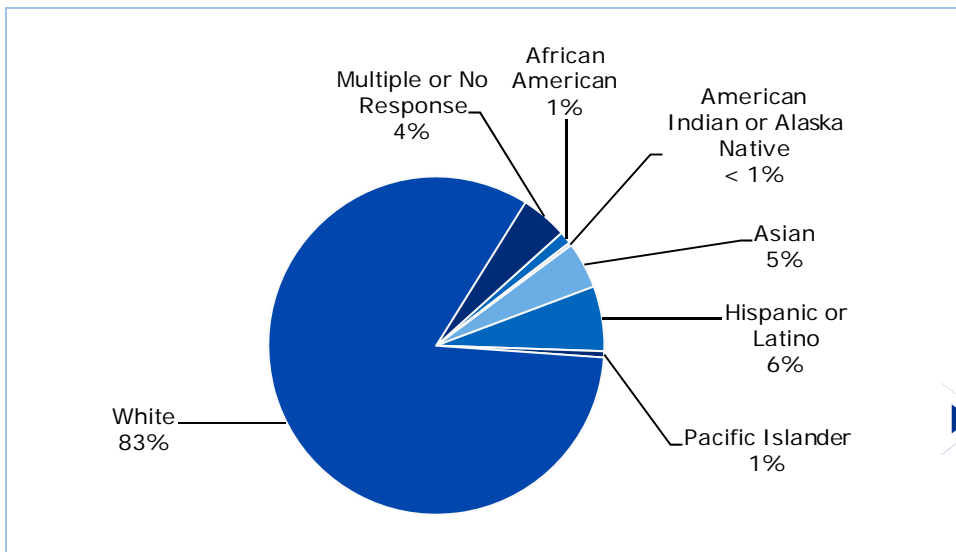
Students are supervised by staff at arrival and departure times, lunch and recess.

Widely supported by our school community, in 2001 the Reed Union School District successfully passed a \$38 million bond for the renovation, modernization, and expansion of all three school sites (Reed, Bel Aire and Del Mar Schools.) In 2005 a second bond was approved for \$13 million in renovations.



Enrollment and Demographics

The total enrollment was 336 students for the 2006-07 school year.





California Standards Tests

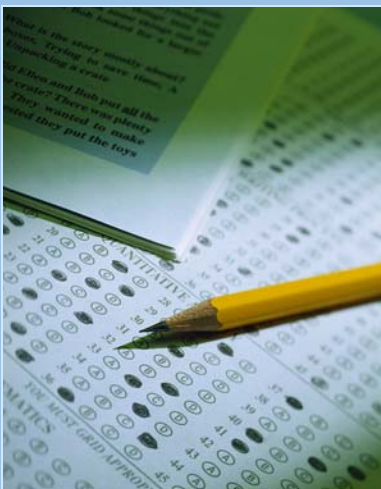
For the 2007 STAR exam, students in grades 2-11 took an English-language arts and mathematics test. Students in grades 4 and 7 also participated in an essay writing test. History-social science tests were given to students in grade 8 and students in grades 5 and 8 took a science test.

Because tests are meant to measure how well students achieve standards rather than how well they do compared to other students, the results are reported as performance levels. The five performance levels are:

- **Advanced** (*exceeds State Standards*)
- **Proficient** (*meets Standards*)
- **Basic**
- **Below basic**
- **Far below basic**

Students scoring at the Proficient or Advanced level meet State Standards in that content area.

The adjacent tables show the percentage of students that scored at proficient or advanced levels in English-language arts, mathematics, science, and history-social science. For a complete report on all subgroups and their scores by grade level, please visit <http://star.cde.ca.gov/>.



California Standards Tests Results

The multiple-choice California Standards Tests (CST) are part of the Standardized Testing and Reporting (STAR) and are administered only to students in California public schools. These tests determine students' achievement of the California Academic Content Standards and provide feedback on their success given what they are expected to know in each grade level and subject.

Percentage of Students Scoring At Proficient or Advanced Levels									
	Del Mar MS			Reed Union SD			California		
	04-05	05-06	06-07	04-05	05-06	06-07	04-05	05-06	06-07
English-Language Arts	85%	87%	84%	85%	87%	87%	40%	42%	43%
Mathematics	73%	80%	82%	79%	85%	87%	38%	40%	40%
Science	*	84%	77%	74%	81%	81%	27%	35%	38%
History-Social Science	77%	85%	72%	77%	85%	72%	32%	33%	33%

* The science portion of the CST was administered for the first time to 8th graders in 2005-06.

CST Subgroup Results: English-Language Arts, Mathematics, Science, and History-Social Science

Percentage of Students Scoring At Proficient or Advanced Levels				
Subgroup	Spring 2007 Results			
	English-Language Arts	Mathematics	Science	History-Social Science
Male	82%	80%	82%	79%
Female	87%	83%	72%	65%
Economically Disadvantaged	❖	❖	❖	❖
English Learners	❖	❖	❖	❖
Students with Disabilities	39%	41%	❖	❖
Migrant Education Services	❖	❖	❖	❖
African American	❖	❖	❖	❖
American Indian or Alaska Native	❖	❖	❖	❖
Asian	87%	83%	❖	❖
Filipino	❖	❖	❖	❖
Hispanic or Latino	35%	40%	❖	❖
Pacific Islander	❖	❖	❖	❖
White	88%	86%	79%	74%

❖ Scores are not shown when the number of students tested is 10 or less, either because the number of students tested in this category is too small for statistical accuracy or to protect student privacy.



Norm Referenced Test Results

Norm referenced tests (NRT) are nationally administered multiple-choice achievement tests that provide statistical feedback on a national level. The purpose of these tests is to determine how well California students are achieving academically compared to students nationally in reading, language, spelling, and mathematics in grades 3 and 7 only. The current NRT adopted by the State Board of Education is the California Achievement Test, Sixth Edition, or CAT/6. For a complete report on all subgroups and their scores by grade level, please visit <http://star.cde.ca.gov/>.

The tables below show the percentage of students that scored at or above the 50th percentile (national average) in reading and math.

Percentage of Students Scoring At or Above the 50th Percentile						
	Reading			Mathematics		
	04-05	05-06	06-07	04-05	05-06	06-07
Del Mar MS	91%	81%	86%	93%	84%	90%
Reed Union SD	86%	86%	84%	89%	85%	91%
California	41%	42%	42%	52%	53%	53%

NRT Subgroup Results: Reading and Math

Percentage of Students Scoring At or Above the 50th Percentile		
Subgroup	Spring 2007 Results	
	Reading	Mathematics
Male	79%	89%
Female	92%	91%
Economically Disadvantaged	❖	❖
English Learners	❖	❖
Students with Disabilities	❖	❖
Migrant Education Services	❖	❖
African American	❖	❖
American Indian or Alaska Native	❖	❖
Asian	❖	❖
Filipino	❖	❖
Hispanic or Latino	❖	❖
Pacific Islander	❖	❖
White	93%	95%

❖ Scores are not shown when the number of students tested is 10 or less, either because the number of students tested in this category is too small for statistical accuracy or to protect student privacy.

California Physical Fitness Test

Each spring, all students in grades 5, 7, and 9 are required to participate in the California Physical Fitness Test (PFT). The test measures six key fitness areas:

1. Aerobic Capacity
2. Body Composition
3. Abdominal Strength
4. Trunk Extension Strength
5. Upper Body Strength
6. Flexibility

To meet fitness standards, students must score in the Healthy Fitness Zone (HFZ) on all six fitness tests. For 2006-07, 65.0% of students in the seventh grade scored in the HFZ. For more information on the California PFT, please visit www.cde.ca.gov/ta/tg/pf/.

School Safety

As a small district, we collaborate with the county office of education, local law enforcement agencies, and other outside services to provide a variety of programs that create a safe learning environment.

Examples of programs in place include:

- Conflict Resolution and counseling programs
- Character Development program
- Social Learning Groups
- Student Support Groups
- Counselors at two sites
- Psychologist and Psychologist-intern at all sites
- Parent education programs coordinated through PTAs
- Specific tobacco and alcohol intervention programs
- Staff development training in teaching Tolerance
- Handbooks with disciplinary policies at all sites

Fire drills are held monthly at Reed and Bel Aire and four times a year at Del Mar. Regular earthquake and intruder-on-campus drills are practiced at each site. The District works closely with the local police and fire department to monitor drills, as well as coordinate communication plans in case of an emergency. The District also periodically practices an all-student emergency release drill.

All schools are equipped with a three-day supply of water and food for emergency purpose.

The District uses the Honeywell Instant Alert system so parents can be instantly notified in an emergency through email, cell phone, or land line at work or at home.

A Disaster Committee, made up of parents and school staff, meets periodically through out the year to review emergency plans and procedures, as well as to update the safety plan.

The School Safety Plan was last reviewed, updated, and discussed with the school faculty in March 2007.



Adequate Yearly Progress

NCLB requires that all schools and districts meet Adequate Yearly Progress (AYP) requirements. To meet these standards, California public schools and districts must meet or exceed criteria in four target areas:

1. Participation rate on statewide assessments
2. Percent of students scoring proficient on statewide assessments
3. API scores
4. Graduation rate for high schools

For a detailed report on Adequate Yearly Progress, please visit www.cde.ca.gov/ta/ac/ay/.

Academic Performance Index

The Academic Performance Index (API) is an annual measure of the academic performance and progress of schools in California. The API is a score on a scale of 200 to 1,000, with 800 set as the statewide target. Schools are ranked in ten categories of equal size from 1 (lowest) to 10 (highest). A similar schools API rank reflects how a school compares to 100 statistically matched "similar schools." The adjacent tables show the school's three-year data for API rank and API growth. For more detailed information, please visit www.cde.ca.gov/ta/ac/ap/.

Testing Note: Assessment data are reported only for numerically significant subgroups. Data may not appear if ethnic/racial, socio-economically disadvantaged, or other subgroups (1) contain less than 100 students with valid test scores OR (2) comprise less than 15% of the school population tested and contain less than 50 students with valid scores.

Adequate Yearly Progress

Adequate Yearly Progress Criteria				
	Del Mar MS		Reed Union SD	
Met Overall AYP	Yes		Yes	
AYP Criteria	English-Language Arts	Mathematics	English-Language Arts	Mathematics
Participation Rate	Yes	Yes	Yes	Yes
Percent Proficient	Yes	Yes	Yes	Yes
API	Yes		Yes	
Graduation Rate	✧		✧	

✧ Not applicable. The graduation rate for AYP criteria applies to high schools.

Academic Performance Index

API Ranks — Three Year Comparison			
	2003-04	2004-05	2005-06
Statewide API Rank	10	10	10
Similar Schools API Rank	9	9	9

API Growth by Student Group — Three Year Comparison				
Group	Actual API Change			2006-07 API Score
	2004-05	2005-06	2006-07	
All Students at the School	6	10	-10	914
African American	■	■	■	■
American Indian or Alaska Native	■	■	■	■
Asian	■	■	■	■
Filipino	■	■	■	■
Hispanic or Latino	■	■	■	■
Pacific Islander	■	■	■	■
White	9	6	0	928
Socioeconomically Disadvantaged	■	■	■	■
English Learners	✧	■	■	■
Students with Disabilities	✧	■	■	■

✧ API scores for English learners and students with disabilities were first reported in the 05-06 API cycle.

■ Data are reported only for numerically significant subgroups.



Teacher Qualifications

The table below shows information about teacher credentials and teacher qualifications. More information can be found by visiting <http://data1.cde.ca.gov/dataquest/>.

Teacher Credential Information				
	Reed Union SD	Del Mar MS		
Teachers	2006-07	04-05	05-06	06-07
With Full Credential	71	23	19	21
Without Full Credential	2	2	4	2
Teaching Outside Subject Area of Competence		0	0	0
		05-06	06-07	07-08*
Teacher Misassignments of English Learners— Teachers of English Learners (EL) without EL certification		0	0	0
Total Teacher Misassignments		0	0	0
Vacant Teacher Positions— teacher in a position that was vacant at the beginning of the year for a full year or an entire semester		0	0	0

* Most current data.

No Child Left Behind Compliant Teachers

Core Academic Courses Taught by NCLB Compliant Teachers		
	% of Classes Taught by NCLB Compliant Teachers	% of Classes Taught by Non-NCLB Compliant Teachers
Del Mar MS	83.8%	16.3%
All Schools in District	88.4%	11.6%
High-Poverty Schools in District	◆	◆
Low-Poverty Schools in District	88.4%	11.6%

◆ Information not available.

Academic Counselors

Number of Academic Counselors (FTE)	Ratio of Students Per Academic Counselor
0.6	589

Suspensions and Expulsions

Suspension and Expulsion Rates						
	Del Mar MS			Reed Union SD		
	2004-05	2005-06	2006-07	2004-05	2005-06	2006-07
Suspension Rate	0.017	0.028	0.143	0.010	0.014	0.071
Expulsion Rate	0.000	0.000	0.000	0.000	0.000	0.000

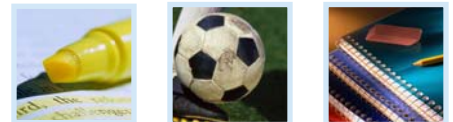
School Support Staff

The following is a list of the support staff at the school and their full-time equivalent (FTE):

- Library Media Teacher (Librarian) 1.00
- Library Media Services Staff (paraprofessional) 0.00
- Psychologist 0.50
- Social Worker 0.00
- Nurse 0.06
- Speech/Language/Hearing Specialist 1.00
- Resource Specialist (non-teaching) 0.00
- Other 7.28

No Child Left Behind Compliant Teachers

No Child Left Behind (NCLB) requires that all teachers of core academic subject areas be "highly qualified." In general, for a teacher to be considered highly qualified, they must have a bachelor's degree, an appropriate California teaching credential, and have demonstrated competence for each core subject he or she teaches. For more information on teacher qualifications related to NCLB, please visit www.cde.ca.gov/nclb/sr/tq.



Suspensions and Expulsions

The adjacent table shows the rate of suspensions and expulsions (the total number of incidents divided by the school's total enrollment) for the most recent three-year period.



Types of Services Funded

General Fund (state and federal) and local funding from the PTA and the Foundation for Reed Schools support our comprehensive school programs. These programs include:

- Core subject area instruction
- K-8 art, music, and PE programs
- Foreign language in grades 3-8
- Elementary and middle school drama productions
- Gifted and Talented Education (GATE) in grades 4-8
- 1:1 laptop program in grades 5-8, 2:1 in grades 3 and 4, and technology learning centers in grades K-2
- Learning Centers and Academy
- Reading intervention programs
- Elementary and middle school library programs
- Reduced classes in grades K-8
- Comprehensive professional development for all employees
- Supplementary instructional materials for all students

SARC—The information contained herein is provided by the California Department of Education: Enrollment and Demographics, Class Size, Counselors and Support Staff, CST, NRT, API, PI, AYP, California PFT, Teacher Qualifications, and some Financial Information. For additional information on facts about California schools and districts, please visit DataQuest at <http://data1.cde.ca.gov/dataquest>. DataQuest is an online resource that provides reports for accountability, test data, enrollment, graduates, dropouts, course enrollments, staffing and data regarding English Learners.

All other information is provided by the school and the district office.

All data accurate as of March 13, 2008.

Federal Intervention Program

Schools that receive Title I funding can enter Program Improvement (PI) if they don't reach AYP over two consecutive years in the same content area (English-language arts or mathematics) or on the same indicator (API or graduation rate). With each additional year that they don't meet AYP, they advance to the next level of intervention. For more information, please visit www.cde.ca.gov/ta/ac/ay.

Federal Intervention Program		
	Del Mar MS	Reed Union SD
Program Improvement Status	Not In PI	Not In PI
First Year of Program Improvement	✧	✧
Year in Program Improvement	✧	✧
Number of Schools Identified for Program Improvement		0
Percent of Schools Identified for Program Improvement		0.0%

✧ Not applicable.

Financial Information

The data displayed is from the 2005-06 school year because the most current fiscal information available provided by the state is always two years behind the current school year, and one year behind most other data included in this report.

District Salary Information — Does not include benefits		
Range	Reed Union SD	Similar Sized District
Beginning Teacher Salary	\$44,153	\$36,760
Mid-Range Teacher Salary	\$68,905	\$52,816
Highest Teacher Salary	\$82,358	\$64,666
Average Principal Salary	\$117,929	\$86,138
Superintendent Salary	\$188,990	\$98,053
% of Budget for Teacher Salaries	41.4%	38.5%
% of Budget for Administrative Salaries	6.4%	6.4%

Financial Data				
	Total Expenditures Per Pupil	Expenditures Per Pupil From Restricted Sources	Expenditures Per Pupil From Unrestricted Sources	Average Teacher Salary
Del Mar MS	\$9,029	\$1,726	\$7,302	\$71,372
Reed Union SD			\$6,497	\$69,580
California			\$4,943	\$54,130
% Difference Between School and District			11.0%	2.5%
% Difference Between School and California			32.3%	24.2%

PUBLISHED BY



www.sia-us.com 800.487.9234